

2700 Highway 34 E - Bldg 100



Location: **Bldg 100**
South Atlanta Cluster
Fayette/Coweta County Submarket
Coweta County
Newnan, GA 30265

Building Type: **Class B Office/Medical**

Status: **Built 1995**

Stories: **1**

RBA: **5,223 SF**

Typical Floor: **5,222 SF**

Total Avail: **No Spaces Currently Available**

% Leased: **100%**

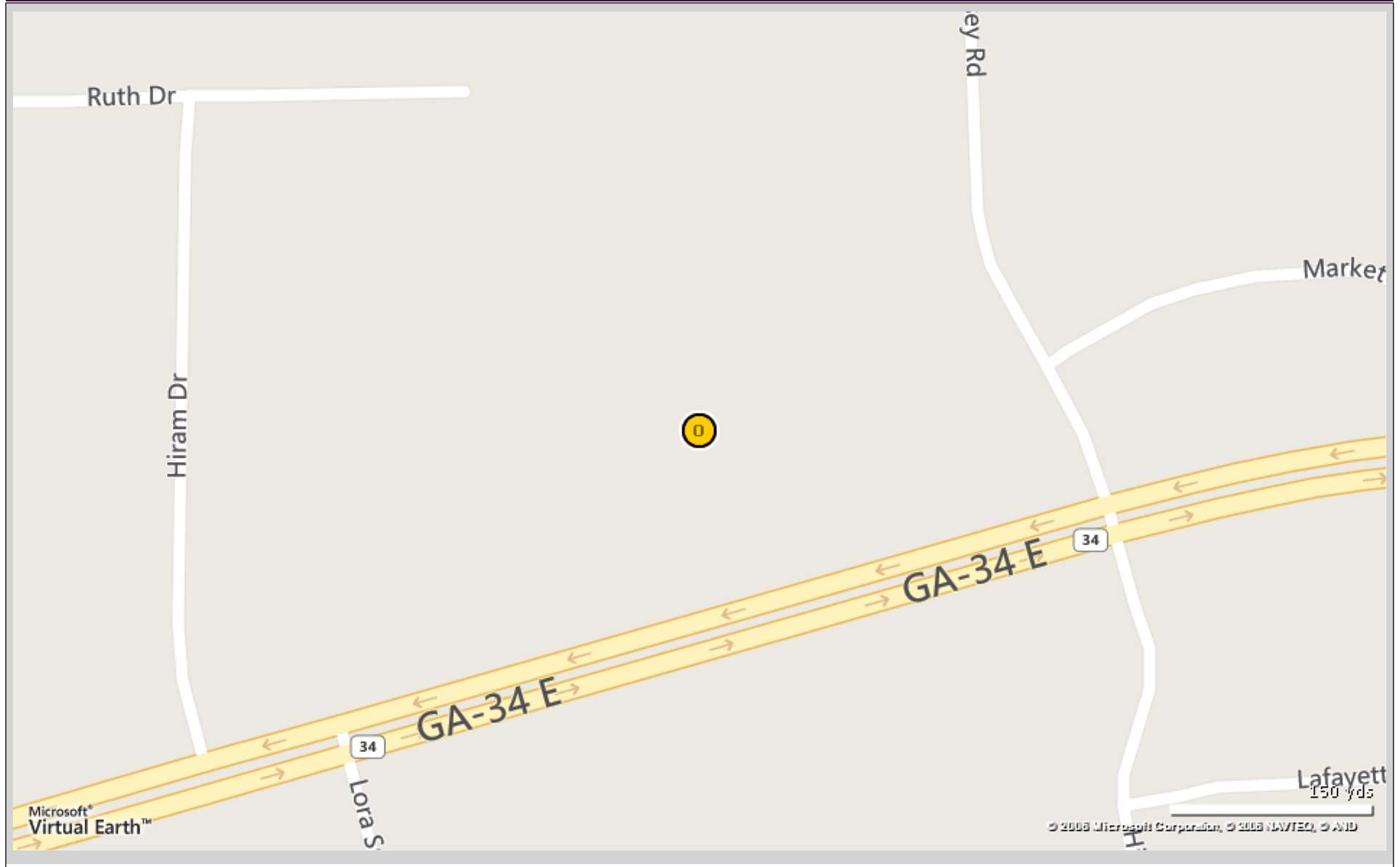
Developer: -
Management: -
Recorded Owner: **Highway 34 East Llc**

Expenses: **2013 Tax @ \$1.21/sf**
Parcel Number: **109-6-027-082**
Parking: **26 free Surface Spaces are available; Ratio of 4.98/1,000 SF**
Amenities: **Banking, Convenience Store, Day Care, Dry Cleaner, Restaurant, Signage**

Aerial / Map Report

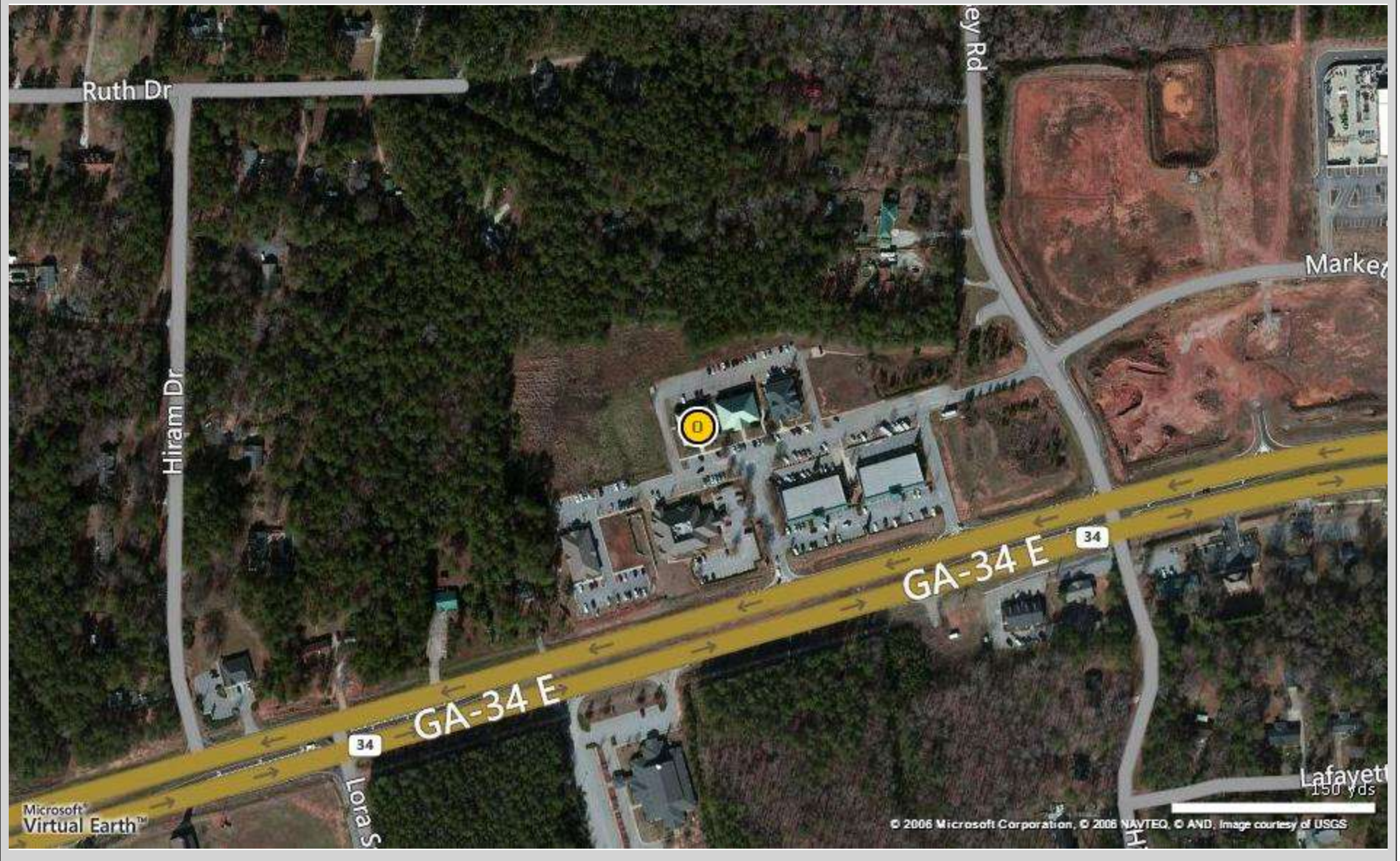
Bldg 100

2700 Highway 34 E - Newnan, GA 30265



Bldg 100

2700 Highway 34 E - Newnan, GA 30265



Bldg 100

2700 Highway 34 E, Newnan, GA 30265

No Site Plan image was found for this property

Tenant data not available for this property

Total Tenants for report: 0

Traffic Count Report

Bldg 100

2700 Highway 34 E, Newnan, GA 30265

Building Type: **Class B Office**
 Class: **B**
 RBA: **5,223 SF**
 Typical Floor: **5,222 SF**
 Total Available: **0 SF**
 % Leased: **100%**
 Rent/SF/Yr: **-**



	Street	Cross Street	Cross Str Dist	Count Year	Avg Daily Volume	Volume Type	Miles from Subject Prop
1	Posey Rd	State Rte 34	0.18 S	2011	1,186	ADT	.18
2	State Rte 34	Ruth Dr	0.10 E	2012	28,490	MPSI	.52
3	Lora Smith Rd	State Rte 34	0.43 N	2011	4,529	ADT	.57
4	Thomas Crossing Dr	Kathleen Ct	0.05 NE	2012	63	MPSI	.60
5	Baker Rd	General Longstreet Line	0.01 N	2012	4,858	MPSI	.76
6	Posey Rd	Hammock Rd	0.09 NW	2012	878	MPSI	.94
7	Sullivan Rd	Oak Hill Blvd	0.03 N	2011	7,021	ADT	.96
8	Baker Rd	Daisy Pl	0.17 S	2012	4,816	MPSI	.97

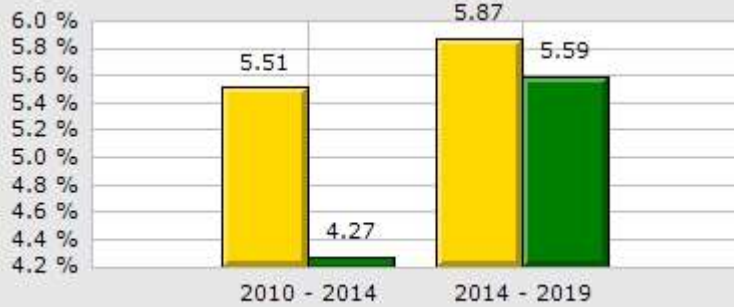
Bldg 100

2700 Highway 34 E, Newnan, GA 30265

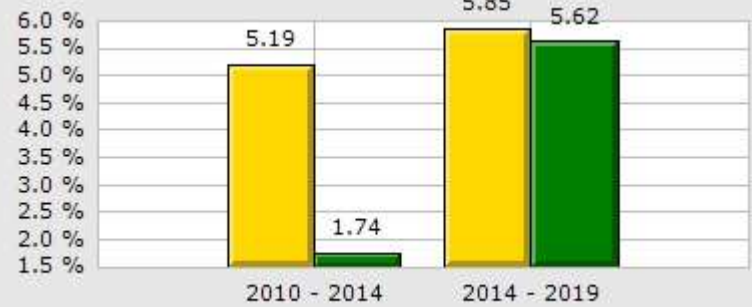
Type: **Class B Office/Medical**
 County: **Coweta**

1 Mile
County

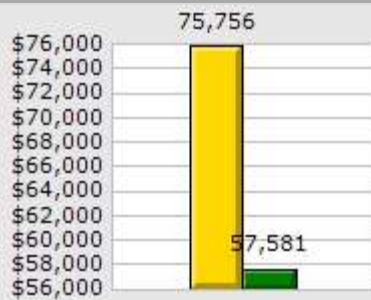
Population Growth



Household Growth



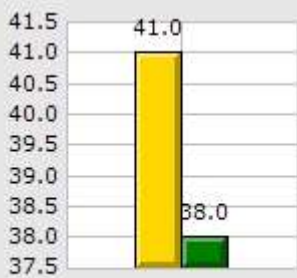
2014 Med Household Inc



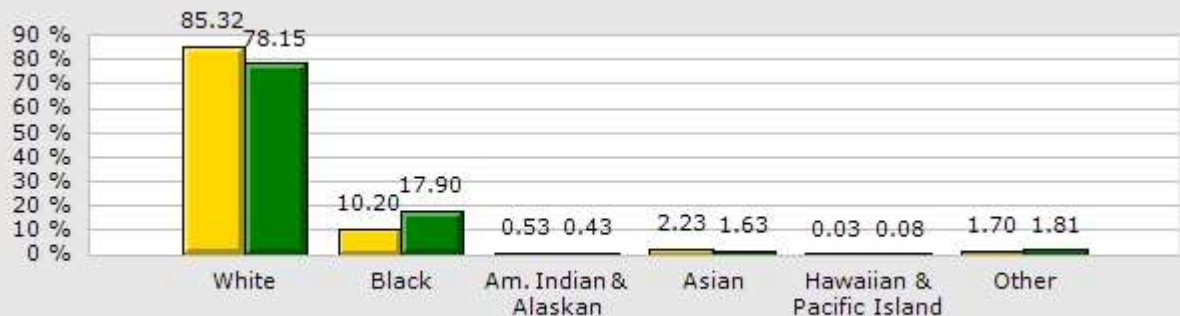
2014 Households by Household Income



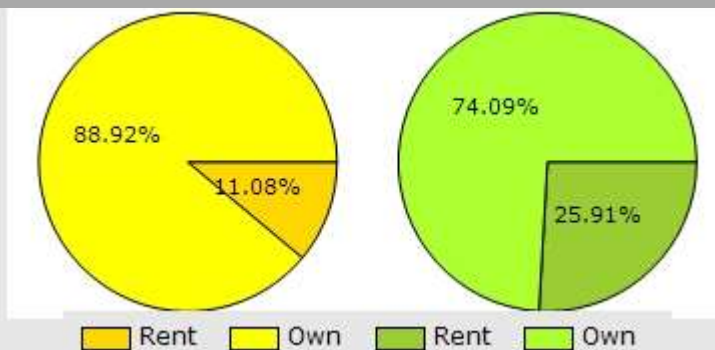
2014 Median Age



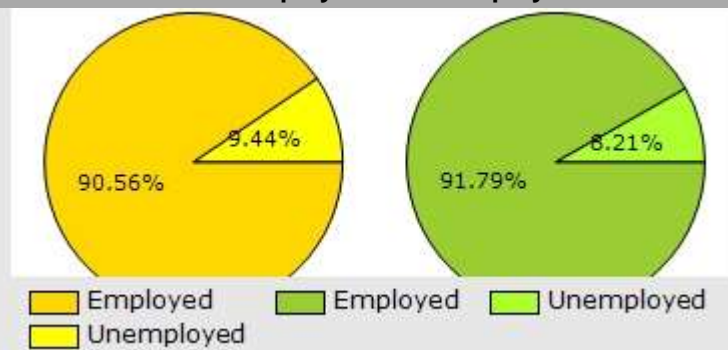
2014 Population by Race



2014 Renter vs. Owner



2014 Employed vs. Unemployed



Demographic Market Comparison Report

1 mile radius

Bldg 100

2700 Highway 34 E, Newnan, GA 30265

Type: **Class B Office/Medical**
 County: **Coweta**

	1 Mile		County	
Population Growth				
Growth 2010 - 2014	5.51%		4.27%	
Growth 2014 - 2019	5.87%		5.59%	
Employed	1,669	90.56%	62,428	91.79%
Unemployed	174	9.44%	5,583	8.21%
2014 Population by Race				
	3,235		132,758	
White	2,760	85.32%	103,757	78.15%
Black	330	10.20%	23,759	17.90%
Am. Indian & Alaskan	17	0.53%	565	0.43%
Asian	72	2.23%	2,163	1.63%
Hawaiian & Pacific Island	1	0.03%	112	0.08%
Other	55	1.70%	2,402	1.81%
Household Growth				
Growth 2010 - 2014	5.19%		1.74%	
Growth 2014 - 2019	5.85%		5.62%	
Renter Occupied	127	11.08%	12,339	25.91%
Owner Occupied	1,019	88.92%	35,291	74.09%
2014 Households by Household Income				
	1,145		47,630	
Income <\$25K	88	7.69%	9,355	19.64%
Income \$25K - \$50K	226	19.74%	11,203	23.52%
Income \$50K - \$75K	252	22.01%	10,008	21.01%
Income \$75K - \$100K	215	18.78%	6,711	14.09%
Income \$100K - \$125K	177	15.46%	3,429	7.20%
Income \$125K - \$150K	76	6.64%	3,176	6.67%
Income \$150K - \$200K	105	9.17%	2,776	5.83%
Income \$200K+	6	0.52%	972	2.04%
2014 Med Household Inc	\$75,756		\$57,581	
2014 Median Age	41.00		38.00	

Demographic Summary Report

Bldg 100 2700 Highway 34 E, Newnan, GA 30265

Building Type: **Class B Office** Total Available: **0 SF**
 Class: **B** % Leased: **100%**
 RBA: **5,223 SF** Rent/SF/Yr: **-**
 Typical Floor: **5,222 SF**



Radius	1 Mile	3 Mile	5 Mile
Population			
2019 Projection	3,426	26,414	58,669
2014 Estimate	3,236	25,018	55,750
2010 Census	3,067	23,939	53,648
Growth 2014 - 2019	5.87%	5.58%	5.24%
Growth 2010 - 2014	5.51%	4.51%	3.92%
2014 Population by Hispanic Origin	219	1,693	3,951
2014 Population By Race	3,236	25,018	55,750
White	2,760 85.29%	20,399 81.54%	45,196 81.07%
Black	330 10.20%	3,288 13.14%	7,408 13.29%
Am. Indian & Alaskan	18 0.56%	103 0.41%	213 0.38%
Asian	72 2.22%	723 2.89%	1,768 3.17%
Hawaiian & Pacific Island	2 0.06%	27 0.11%	66 0.12%
Other	54 1.67%	479 1.91%	1,099 1.97%
Households			
2019 Projection	1,213	9,522	21,166
2014 Estimate	1,146	9,011	20,103
2010 Census	1,085	8,603	19,333
Growth 2014 - 2019	5.85%	5.67%	5.29%
Growth 2010 - 2014	5.19%	3.39%	2.25%
Owner Occupied	1,019 88.92%	7,138 79.21%	15,397 76.59%
Renter Occupied	127 11.08%	1,873 20.79%	4,706 23.41%
2014 Households by HH Income	1,145	9,011	20,106
Income: <\$25,000	88 7.69%	1,031 11.44%	2,448 12.18%
Income: \$25,000 - \$50,000	226 19.74%	1,545 17.15%	3,594 17.88%
Income: \$50,000 - \$75,000	252 22.01%	2,317 25.71%	4,709 23.42%
Income: \$75,000 - \$100,000	215 18.78%	1,450 16.09%	3,487 17.34%
Income: \$100,000 - \$125,000	177 15.46%	1,407 15.61%	2,696 13.41%
Income: \$125,000 - \$150,000	76 6.64%	498 5.53%	1,070 5.32%
Income: \$150,000 - \$200,000	105 9.17%	652 7.24%	1,472 7.32%
Income: \$200,000+	6 0.52%	111 1.23%	630 3.13%
2014 Avg Household Income	\$83,133	\$80,134	\$83,416
2014 Med Household Income	\$75,756	\$71,227	\$71,564

Bldg 100
2700 Highway 34 E, Newnan, GA 30265

Building Type: **Class B Office** Total Available: **0 SF**
 Class: **B** % Leased: **100%**
 RBA: **5,223 SF** Rent/SF/Yr: **-**
 Typical Floor: **5,222 SF**



Business Employment by Type	# of Businesses	# Employees	#Emp/Bus
Total Businesses	303	2,526	8
Retail & Wholesale Trade	46	678	15
Hospitality & Food Service	23	389	17
Real Estate, Renting, Leasing	12	186	16
Finance & Insurance	28	113	4
Information	2	4	2
Scientific & Technology Services	20	94	5
Management of Companies	0	0	0
Health Care & Social Assistance	109	766	7
Educational Services	1	35	35
Public Administration & Sales	2	12	6
Arts, Entertainment, Recreation	0	0	0
Utilities & Waste Management	11	58	5
Construction	10	31	3
Manufacturing	3	12	4
Agriculture, Mining, Fishing	0	0	0
Other Services	36	148	4

Consumer Spending Report

Bldg 100

2700 Highway 34 E, Newnan, GA 30265

Building Type: **Class B Office**
 Class: **B**
 RBA: **5,223 SF**
 Typical Floor: **5,222 SF**
 Total Available: **0 SF**
 % Leased: **100%**
 Rent/SF/Yr: **-**



2014 Annual Spending (\$000s)	1 Mile	3 Mile	5 Mile
Total Specified Consumer Spending	\$38,158	\$281,068	\$629,951
Total Apparel	\$2,003	\$15,196	\$34,278
Women's Apparel	816	6,094	13,688
Men's Apparel	438	3,256	7,343
Girl's Apparel	149	1,198	2,745
Boy's Apparel	106	834	1,903
Infant Apparel	81	647	1,477
Footwear	413	3,168	7,123
Total Entertainment & Hobbies	\$2,840	\$21,059	\$47,146
Entertainment	472	3,249	7,332
Audio & Visual Equipment/Service	1,337	10,222	22,915
Reading Materials	127	926	2,054
Pets, Toys, & Hobbies	904	6,662	14,845
Total Food and Alcohol	\$9,185	\$69,535	\$155,601
Food At Home	4,950	37,612	83,694
Food Away From Home	3,660	27,608	62,107
Alcoholic Beverages	575	4,315	9,800
Total Household	\$5,183	\$38,385	\$87,394
House Maintenance & Repair	1,089	7,651	16,698
Household Equip & Furnishings	2,070	15,683	36,030
Household Operations	1,493	11,168	25,641
Housing Costs	531	3,883	9,026

Consumer Spending Report

Bldg 100

2700 Highway 34 E, Newnan, GA 30265

2014 Annual Spending (000s)	1 Mile	3 Mile	5 Mile
Total Transportation/Maint.	\$11,883	\$84,430	\$187,988
Vehicle Purchases	4,645	30,633	67,818
Gasoline	5,352	39,813	88,226
Vehicle Expenses	234	1,645	3,862
Transportation	560	4,254	9,942
Automotive Repair & Maintenance	1,091	8,085	18,140
Total Health Care	\$2,009	\$14,693	\$32,312
Medical Services	1,075	7,877	17,447
Prescription Drugs	749	5,453	11,859
Medical Supplies	185	1,364	3,006
Total Education/Day Care	\$2,265	\$16,907	\$38,582
Education	1,493	11,167	25,294
Fees & Admissions	772	5,740	13,288